



## **INSTALLATION INSTRUCTIONS**

### **AUDACITY 6.0MM HYBRID RIGID CORE**

**Materials shall be installed in accordance with AUSTRALIAN STANDARDS 1884 – 2012  
Floor coverings – Resilient sheet and tiles – Installation practices.  
Please read and follow all instructions before you begin the installation**

#### **1. INTRODUCTION**

##### **Floating floor structure**

- Audacity Hybrid Rigid Core Flooring is considered a “floating floor” and is installed using a floating floor system. These floors are intended for indoor use only and can be installed over virtually any existing floor structure.
- This floor may expand and contract with changes in heat and relative humidity, therefore the use of an expansion gap of 6.0mm will be required. These expansion gaps will be covered when the skirting is replaced, or new skirting is installed. If the skirtings are left in place, a molding system will be required to cover the expansion gap.
- Flooring should only be installed in temperature-controlled environments. It is necessary to maintain a constant temperature of 20-25°C before, during and after the installation. Portable heaters are not recommended as they may not heat the room and subfloor sufficiently. Kerosene heaters should never be used.
- After installation, make sure that the flooring is not be exposed to temperatures less than 10°C or greater than 50°C.
- For floor surfaces exceeding 400 m<sup>2</sup> and/or lengths exceeding 20 m, use expansion moldings.

##### **Do not**

- Attach to the subfloor at any point.
- Install cabinets or island benches over the top of the flooring.
- Fit flush against any fixed vertical surfaces like walls, permanent fixtures, door frames, pipes or staircases.

**For Audacity Hybrid Rigid Core Flooring installation, the subfloor preparation should follow the requirements as set in the Australian Standard 1884-2012 Resilient Sheet and Tiles Installation Practices and these Armstrong Flooring installation instructions.**

##### **Installer Responsibility**

- Prior to installation, the installer has final inspection responsibility as to manufacture and factory finish. The installer must use reasonable selectivity and hold out or cut off pieces with deficiencies, whatever the cause, should any individual piece be doubtful, the installer should not use the piece.
- This inspection of all flooring should be done before installation.
- Carefully examine flooring for colour, finish and quality before installing it. If material is not acceptable, do not install it and contact the seller immediately.
- Prior to installation, the installer must determine that the job-site environment and the subfloors involved meet or exceed all applicable standards.

**FOLLOW US**



- Recommendations of the construction and materials industries as well as local codes must be followed. These instructions recommend that the construction and subfloor be dry, hard, structurally sound and at.
- The manufacturer declines any responsibility for job failure resulting from or associated with subfloor and substrates or job-site environmental deficiencies.
- Use of stain, filler or putty stick for touch-up and appropriate products for correcting subfloor voids is accepted as part of normal installation procedures.

## 2. SUBFLOOR

- The condition of the subfloor not only has an important bearing on the appearance of the finished installation, but can dramatically affect the life and service ability of the Audacity Hybrid Rigid Core Flooring. It is essential therefore that the subfloor should be dry, hard, rigid, smooth, level, clean and free of dust, grease and or any other contaminants.
- Audacity Hybrid Rigid Core Flooring can be installed over most existing hard floor covering surfaces like vinyl, linoleum and ceramic tiles. Ceramic tile joints should be smoothed with a levelling compound and the ceramic tile surface be within the planeness tolerance (see below).
- Floating floors, carpet, cushion-backed vinyl or other soft flooring products are not suitable substrates.

### Planeness

- All subfloors need to be sufficiently flat to accept a floating floor, when a 2 meter straightedge is at rest at two points on any part of the floor, there is to be no more than a 3.0mm gap under the straightedge.
- The substrate should not slope more than 25mm per 2 meters in any direction.
- Installing Audacity Hybrid Rigid Core Flooring over subfloors that do not meet the specific planeness requirements could lead to locking system failure and will not be covered by the product warranty.

### Concrete Subfloors:

- Concrete subfloors must be cured and completely dry. The surface must be steel troweled to a smooth dense porous surface free of trowel marks, irregularities and undulation.
- Concrete slabs in contact with fill, hard-core or the ground must have a damp-proof membrane to prevent entry of moisture. Water proofing additives and curing compounds do not negate the need for a damp-proof membrane. New concrete slabs will dry at an approximate rate of 1.0mm per day, to be measured from the time the slab was last wet e.g. 100mm slab will take 100 days to dry. This will vary depending on weather conditions and the surface of the concrete, e.g. a burnished concrete surface will take longer to dry.

### **A MOISTURE TEST SHOULD ALWAYS BE CARRIED OUT AND THE RESULTS RECORDED IN ACCORDANCE WITH THE AUSTRALIAN STANDARD 1884-2012 APPENDIX A PRIOR TO INSTALLATION**

- If there is any doubt about moisture in the slab it is recommended to protect the Audacity Hybrid Rigid Core Flooring by using a 0.2mm (200 micron) polyethylene plastic sheeting, overlapped by 200mm and taped using a waterproof tape. The plastic sheeting should extend up the wall and be trimmed to the top side of the floor after the installation has been completed but before installing the trim.

This product can be installed over 12mm embedded radiant heating systems by following the instructions below:

- Ensure the radiant heat surface temperature never exceeds 28°C.
- Before installing over newly constructed radiant heat systems, operate the system at maximum capacity to force any residual moisture from the cementitious topping of the radiant heat system.
- Shut down the floor heating at least 48 hours prior to installation and make sure that the temperature in the room is at least 15°C during installation.
- It is recommended that the radiant heat be applied in a gradual manner (5-degree increments) after installing the floor.
- Refer to the radiant heat system's manufacturer recommendations for additional guidance.

### Timber Subfloor

- All timber subfloors (including tongue & groove, particle board & plywood) must have at least 450mm of good cross ventilation under the floor to prevent distortion and movement of flooring members. Timber subfloors should be rigid, sound, free from excessive moisture, cupping and warping and constructed to relevant building standards. Old timber subfloors should have all loose boards re-nailed and badly worn or damaged boards must be replaced.
- Sand timber floors to a flat smooth finish without undulations before installing Audacity Hybrid Rigid Core Flooring. Planeness is to be no more than 3.0mm gap under a 2 meter straightedge at rest on any part of the timber floor.

### Conditioning:

In general Audacity Hybrid Rigid Core floors do not require acclimatisation, however depending on storage/transport conditions e.g. being transported in a vehicle where temperatures could easily exceed 50°C, it is recommended that the product is acclimatised for 12 hours at the same temperature range as the room in which it is to be installed (ideally 20°C - 25°C)

## 3. PRE-INSTALLATION CHECKLIST

Before installing this material, check:

- Has the product been acclimatized correctly?
- Is this the correct
  - ✓ Product?
  - ✓ Colour?
  - ✓ Pattern?
  - ✓ Dimensions?
- Does this stock match the customer's expectations?
- Have you read and are you following the installation recommendations?
- Check all planks in daylight before and during installation. Planks with minor defects can be used for cuts.
- Any defects must be reported back to the store of purchase for an immediate replacement or refund.

**CLAIMS RELATING TO SURFACE/VISUAL DEFECTS MAY NOT BE ACCEPTED AFTER INSTALLATION. CONTACT YOUR RETAILER IF YOU HAVE ANY CONCERNS.**

## 4. INSTALLATION

FOLLOW US



## PREPARATION

1. Audacity Hybrid Rigid Core Flooring comes with a pre-attached backing, adding an additional underlay will void the warranty.
2. The best option is to remove the existing skirtings, quarter round or scotia trim before installing the Audacity Hybrid Rigid Core Flooring. If this is not possible a molding will be required to cover the required 6.0mm expansion gap around the edges.
3. Door trims and door jambs must be undercut to allow the floor to move freely. Use a discarded piece of floor to support the saw blade at the correct height for undercutting.
4. The bottom of the doors may also need to be adjusted to clear the Audacity Hybrid Rigid Core Flooring.
5. Sweep/vacuum the subfloor to remove all dust and debris.

## LAYOUT

- Calculate the room size prior to installation, allowing an extra 10% of flooring for cutting waste.
- Install Audacity Hybrid Rigid Core Flooring toward the main light source (e.g. large windows or of incoming light from any windows) or, if lighting is not a concern, parallel to the longest wall in the room. The direction should be confirmed with the consumer before commencing the installation.
- Plan the job to have as large a piece as possible on the long sides of the room, you may need to scribe the first row to the wall to achieve this.
- For the best result, make sure to always work from 3 to 4 cartons at a time mixing the planks during the installation.

## OTHER TOOLS

- Carpenters square and long straightedge
- Pencil/tape measure
- Utility knife
- Spacers to maintain expansion gap around the edge
- Bradding gun to fix skirtings or quads/mouldings
- Vacuum cleaner/broom and dustpan
- White rubber mallet

## INSTALLING THE FIRST ROW

1. **First row, first plank:** After thoroughly cleaning the subfloor, you should begin laying from left to right. Position the first plank so that grooved edge is facing you. Place the floorboard 6.0 mm from the left wall. Use spacers between the wall and the floorboard.
2. **First row, second plank:** Drop the plank and gently tap down the end with a rubber mallet so it firmly locks into the previous plank until both are at the same height. Make sure both planks are perfectly aligned. It is crucial that after the short edges of two connecting planks are correctly aligned, and the rubber mallet contacts the plank in the area directly above the short edge, allowing for a correct locking. Note: Tapping the area close to the short edge, but not directly above it, may result in permanent damage to the joint. Continue installing the first row until you reach the wall on the right.

**IMPORTANT:** If you notice both planks aren't at the same height or are not well locked together, please follow the disassembling instructions at the bottom of the page, disassemble and check if any debris stuck inside the lock is obstructing.

3. **First row, last plank:** At the end of the first row, leave an expansion gap of 6.0 mm to the wall and measure the length of the last plank to fit.
4. **To cut the plank:** Use a simple utility knife and ruler, and with the top side facing up, cut heavily and several times on the same axis. The knife will not go through the surface but make a deep cut. You can then lift one half of the plank using your other hand to hold down the second placing it very close to the cut. The plank will split naturally.

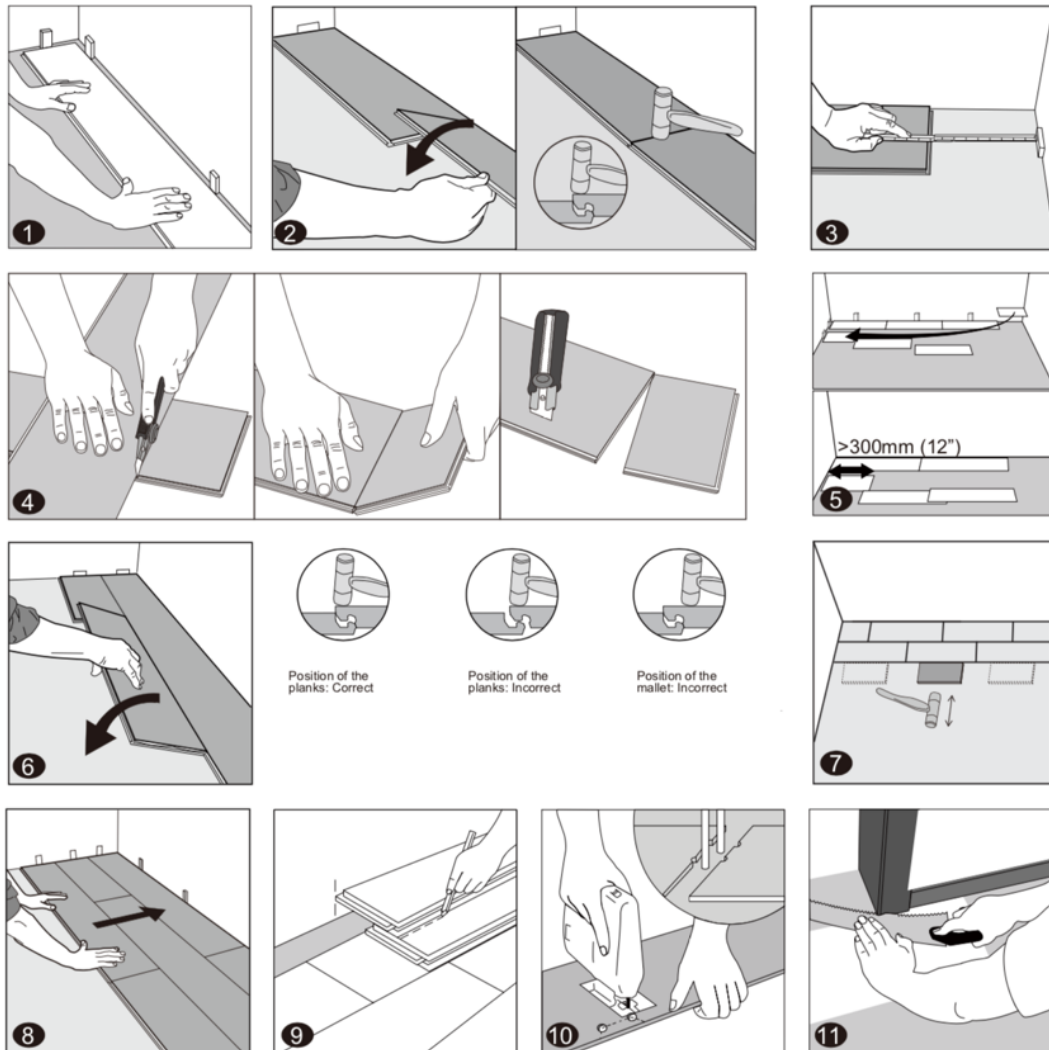
### INSTALLING REMAINING ROWS

5. **Second row, first plank:** Start the second row with the leftover cut part of the last plank of the previous row. This small plank should measure at least 300mm. Otherwise, cut a new plank in half and use it to begin the second row. The end joints of each adjoining row should not be closer than 200mm to each other. Whenever practical, use the piece cut from the preceding row to start the next row.
6. **Second row, second plank:** Click the long side of the plank into the previous row and place it tight to the short end of the previous plank with an angle of 25-30 degrees. Drop the plank and gently tap on the end with a rubber mallet so it firmly locks into the previous plank until both are at the same height. Make sure both planks are perfectly aligned.
7. **After finishing the installation of every row:** Use scrap pieces and a small hammer or rubber mallet to gently tap the planks into the click of the previous row to make sure they are tightly clicked together and make sure there is no gap between the long side of the planks installed. Any gapping can compromise the whole installation.
8. **Tip:** After the first 2-3 rows of planks are installed, they should be checked with a string line to ensure that rows are still running straight. If they are not, it could be that the starting wall has some irregularities that caused bowing in the installation. If so, the starting row of planks may have to be scribed and re-trimmed to account for any unevenness in the wall. This can be done without having to disassemble the beginning rows.

### INSTALLING THE LAST ROW

9. The last row of the installation will need to be cut lengthwise. Place the row of planks to be fitted on top of the last row of installed planks. Use a piece of the plank as a scribe to trace with a pencil the contour of the wall. Cut the plank to fit using the table saw and allow for the required expansion space. Lay the piece into position (you may need to use a pull bar to tighten the joints).
10. The last row should be at least 50 mm wide. The spacers can then be removed.
11. To make holes for pipes, measure the diameter and position of the pipe and drill the hole approximately 6.0mm larger than the diameter of the pipe.
  - a. To allow piece to be installed, cut a piece from the back side of the pipe using a slight 'v' shape.
  - b. Sit piece into place, insert the v piece in behind the pipe and glue in place with wood work glue, use spacing wedges to hold the 'v' piece in place while the adhesive sets.
12. Door molding and skirting: Lay a board (with the decorative side down) next to the door molding and saw as shown in the figure. Then slide the floorboard under molding.

**Warning:** Failure to properly line up the end joint and attempting to force it in while out of alignment could result in permanent damage to the end joint.



## DISASSEMBLY

Separate the whole row by lifting it up delicately at an angle. To separate the planks, leave them at on the ground and slide them apart. If the planks do not separate easily, you can lift up slightly and slide apart.

## BATHROOM INSTALLATION RECOMMENDATIONS

Audacity Hybrid Rigid Core are suitable for installation in bathrooms and toilets. Install as per standard recommendations (subject to relevant statutory and government requirements).

### Bathrooms

- Install main floor areas as per standard recommendations.
- At the junction where Audacity Hybrid Rigid Core are installed against shower bases or baths, the following method is recommended:
  - Leave a 3.0mm expansion gap.
  - Completely fill expansion gaps with colour matched 100% silicone caulk by following the manufacturer's recommendations.
    - When applying caulk, it is helpful to first apply a strip of masking tape parallel to and approximately 0.80mm from the edge of the flooring.

- Fill the expansion zone with caulk, remove the excess with a plastic scraper or putty knife and remove the tape.

#### **Toilets**

- The toilet should be removed before installing the flooring.
- Allow a 6.5 mm expansion gap between the flooring edge and the toilet ange. Completely seal the gap with 100% silicone caulk.

### **1. MAINTENANCE INSTRUCTIONS**

#### **INITIAL CARE**

After installation is completed, the following must be performed:

- Remove all debris with an electrostatic mop or vacuum.
- Use a damp mop to mop with Armstrong Flooring Once n' Done (or similar pH 7.0-8.5 neutral cleaner).

#### **REGULAR MAINTENANCE**

- Sweep or vacuum your new floor regularly to remove loose dirt which can scratch your floor.
- The use of residential steam mops on this product is allowed. Use at lowest power with a suitable soft pad, and do not hold a steam mop on one spot for an extended period of time (longer than 5 minutes). Refer to the steam mop's manufacturer instructions for proper usage.
- Wipe up spills as soon as possible.
- Never use highly abrasive scrubbing tools on any resilient floor.
- Damp mop your floor regularly with a neutral detergent such as Armstrong Flooring Once 'n' Done floor cleaner (or similar pH 7.0-8.5 neutral cleaner).
- Do NOT use detergents, abrasive cleaners, or "mop and shine" products. These products may leave a dull lm on your floor.
- Do NOT use paste wax or solvent based polishes.
- Do not use highly alkaline 'floor strippers' to clean the floor covering. Highly alkaline solutions have the potential to damage the adhesive bonds between the planks.

#### **PROACTIVE PROTECTION OF YOUR FLOOR**

- Use floor protectors under furniture to reduce indentation. As a general rule of thumb, the heavier the item, the wider the floor protector needed.
- Place a walk-off mat at outside entrances to reduce the amount of dirt brought into your home. Armstrong Flooring strongly recommends the use of mats without a latex or rubber (particularly black) backing since these can cause permanent discoloration.
- Do not drag or slide heavy objects across the floor. When moving appliances or heavy furniture it is always wise to lay a plywood panel, or similar, on your floor and "walk" the item across it. This protects your floor from scuffing, gouging and tears.
- All Armstrong Flooring floor care products have been specifically developed to care for Armstrong Flooring products.